



Get Out!

Evacuation in the Wilderness

Will Smith, MD, EMT-P

Wilderness and Emergency Medicine
Consulting, LLC

www.wildmedconsulting.com



Objectives

- Pre-planning your trip
 - What details to leave
- What to do if you're lost / injured
 - How to have someone find you
- What happens behind the scenes of a search and rescue operation
- Evacuation options in wilderness



Pre-Planning

- Tell responsible person
 - Where you are going and detailed travel plan
 - The members party and pertinent health issues
 - Estimated date and time of return
 - Set 'alarm time' - when to call help
 - Who to call to activate help
 - Provide number



Be Self Sufficient

- Prevention
 - Group leader monitor trip and skill level
 - Abort trip before event occurs
- Survival skills and equipment
- First Aid Kit (as appropriate)
- Basic self-rescue plan thought through
- Adequate clothing/gear





What to do if you are lost?

- Stay Calm!!!
- When are you expected to check in?
- Stay where you are / Stay together
- If you are forced to move, leave signs
 - Direction of travel arrows, notes, etc.
- Be ready to signal for help (mirror, smoke, etc.)



What to do if you are injured?

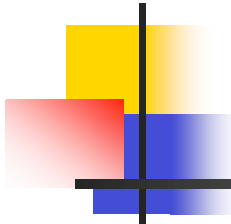
- Stay calm!!!
- When/How is help coming?
 - Can you call for help?
 - Cell/Satellite phone
 - Personal Locater Beacon (PLB)
- Can you self evacuate?
 - Stabilize as best as possible



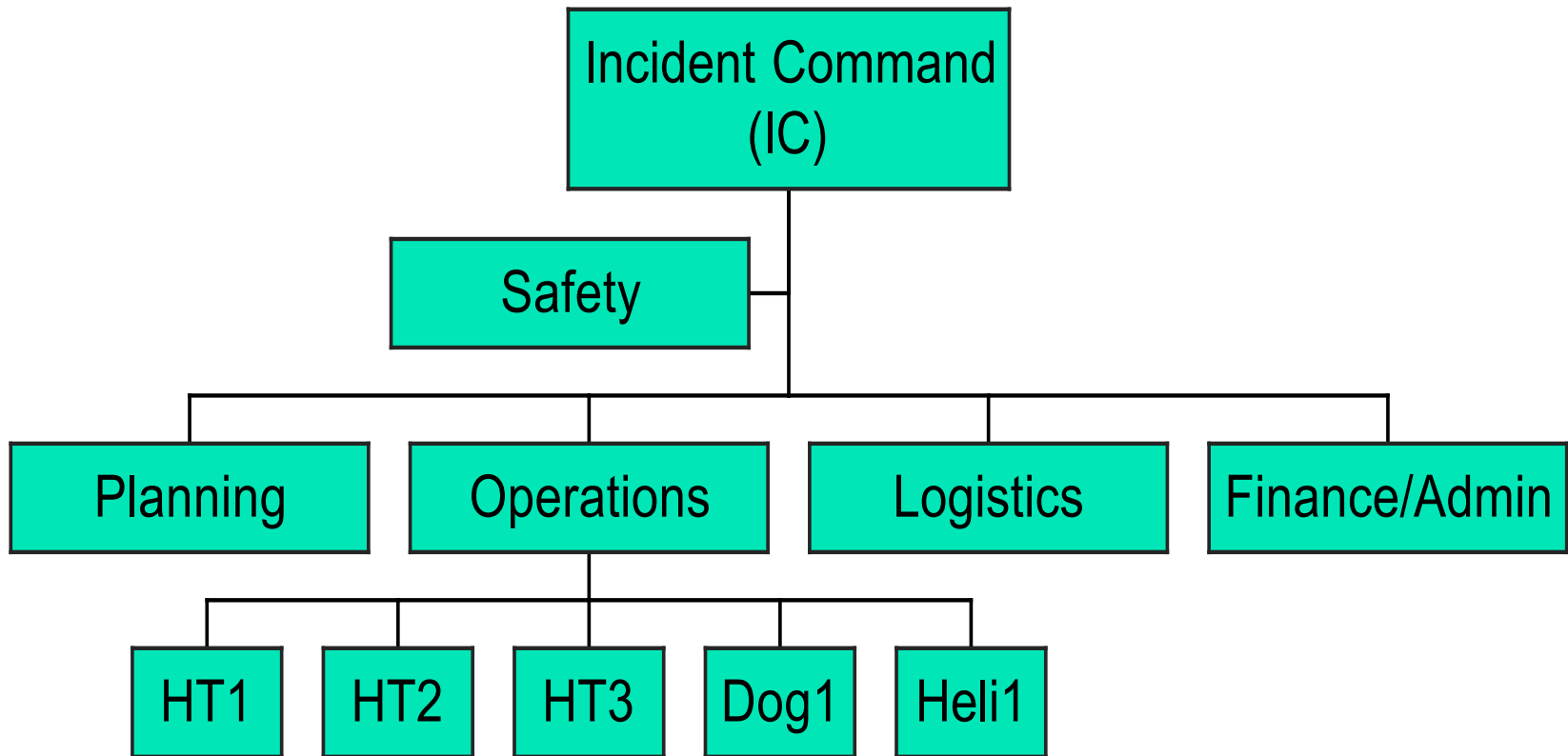


Search and Rescue

- Managing Search Function (MSF)
- Incident Command System (ICS)
 - 5 main ICS Sections
 - Incident Command (IC)
 - Planning
 - Operations (Ops)
 - Logistics
 - Finance/Administration



ICS





Wind River Search

- 56 y.o. Male overdue from 1 week solo peak bagging trip in Wyoming wilderness.





MSF - Initial Response

- Investigate
 - Lost Person Data, Determine Urgency
- Point Last Seen (PLS) or Last Known Point (LKP)
- Direction of Travel
- Hasty Search High Probability of Areas (POA)

Incident Command Post (ICP)



Wind River Search

- LKP
 - Pyramid Lake
- Journal Found
 - Entered Sat
 - Last entry Tue
 - Expected Sat
 - Search Began Sun
 - Addl Resources Mon
 - Found Thursday

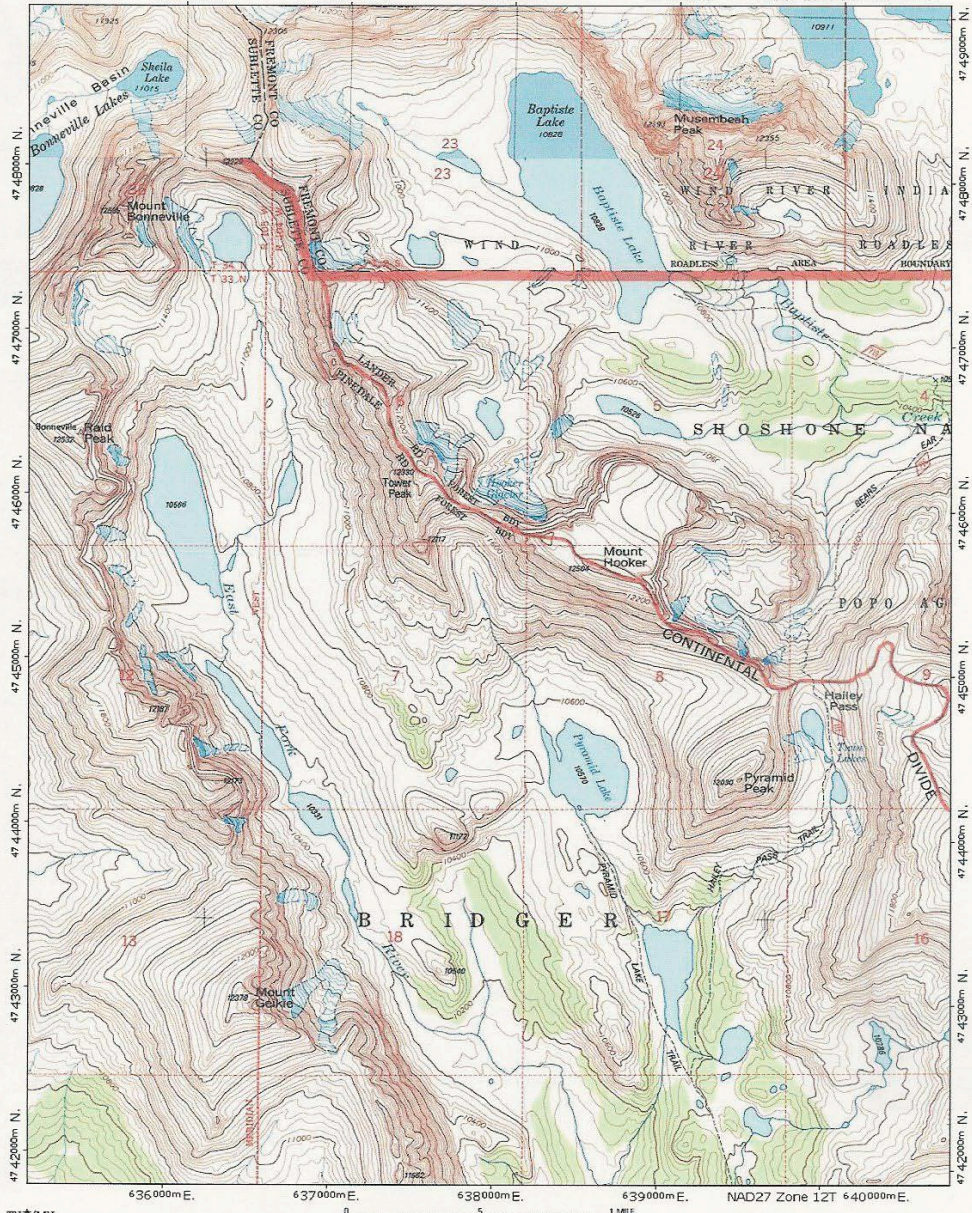




- Establish Search Areas (POA)
 - Draw search areas
 - Average probabilities from several search planners
 - ROW - Rest of World
 - Confinement

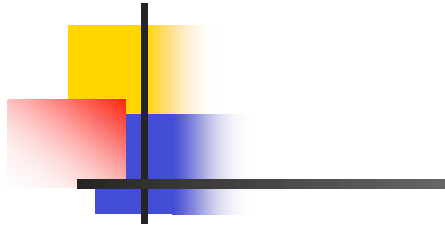
TOPOI map printed on 07/18/07 from "Untitled.tpo"

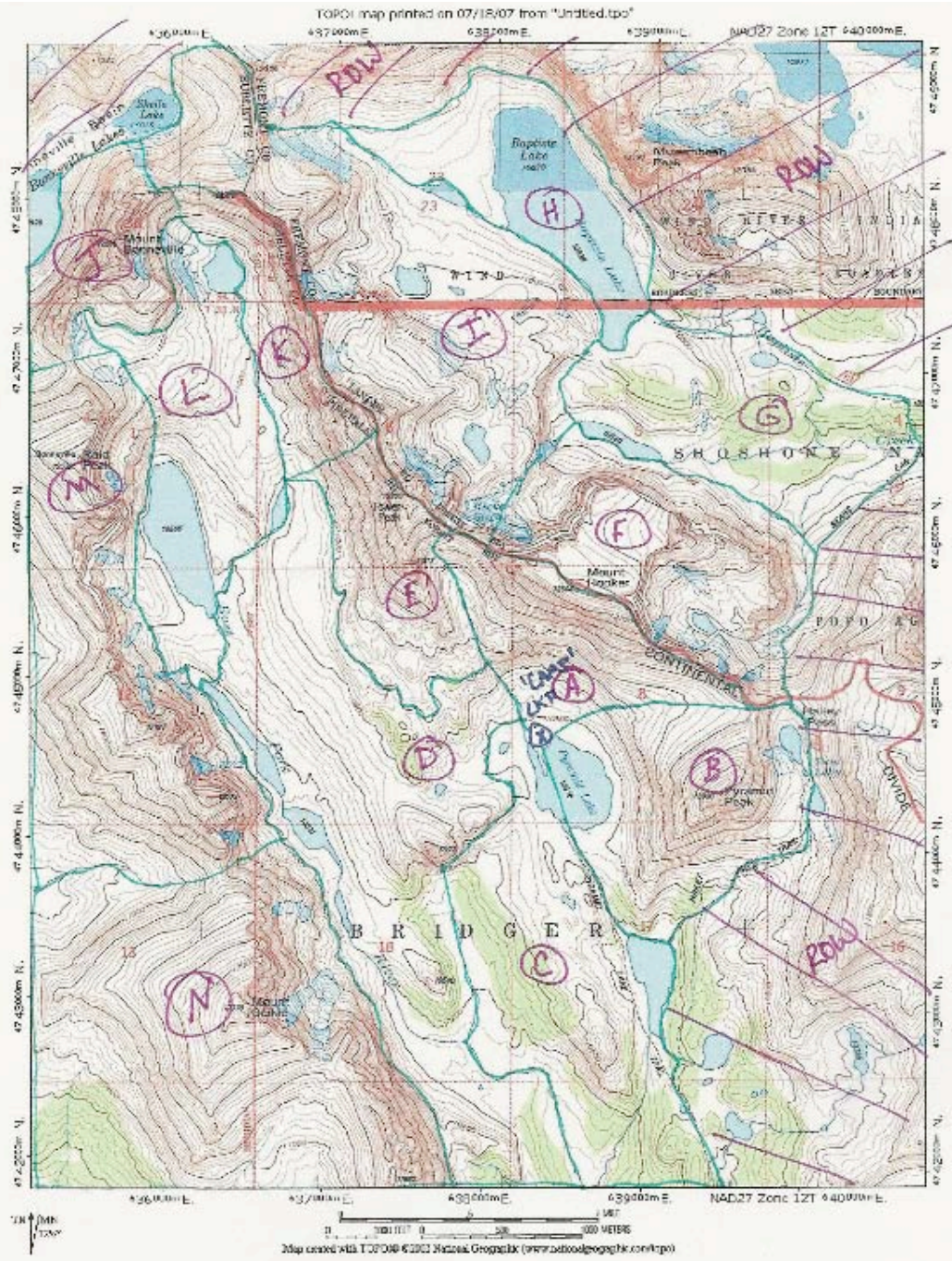
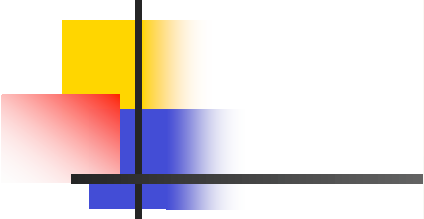
636000m E. 637000m E. 638000m E. 639000m E. NAD27 Zone 12T 640000m E.



TN MN
121°

Map created with TOPOI ©2003 National Geographic (www.nationalgeographic.com/topo)





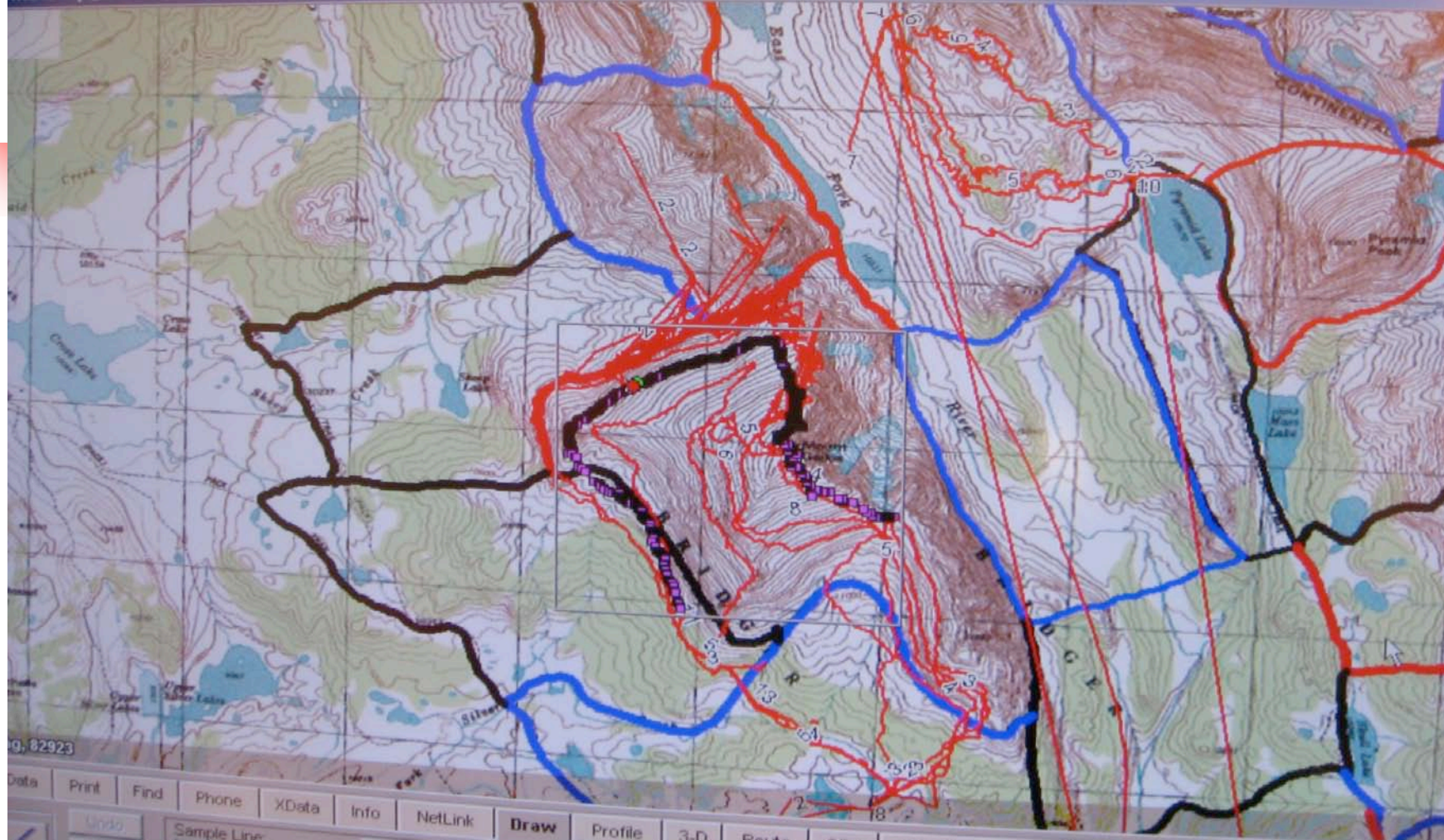


MSF

- Track teams and clues on map
 - GPS downloads
- Probability of Detection (POD)
- Probability of Success (POS)
 - $POD \times POA$
- Shifting POA - after area searched



me XMap® 4.0 - Kaske_POO_Map



g, 82923

Data Print Find Phone XData Info NetLink **Draw** Profile 3-D Route GPS Handheld Export Map L

Undo Delete Clear All File... Show Measurement Done

Style Color Weight Map

Latitude: N42° 49.936'
Longitude: W109° 20.447'
Distance: 0.01
Bearing: 232.071

Apply

Resources

- Ground Teams
 - Technical (climbing)
 - Non-Technical

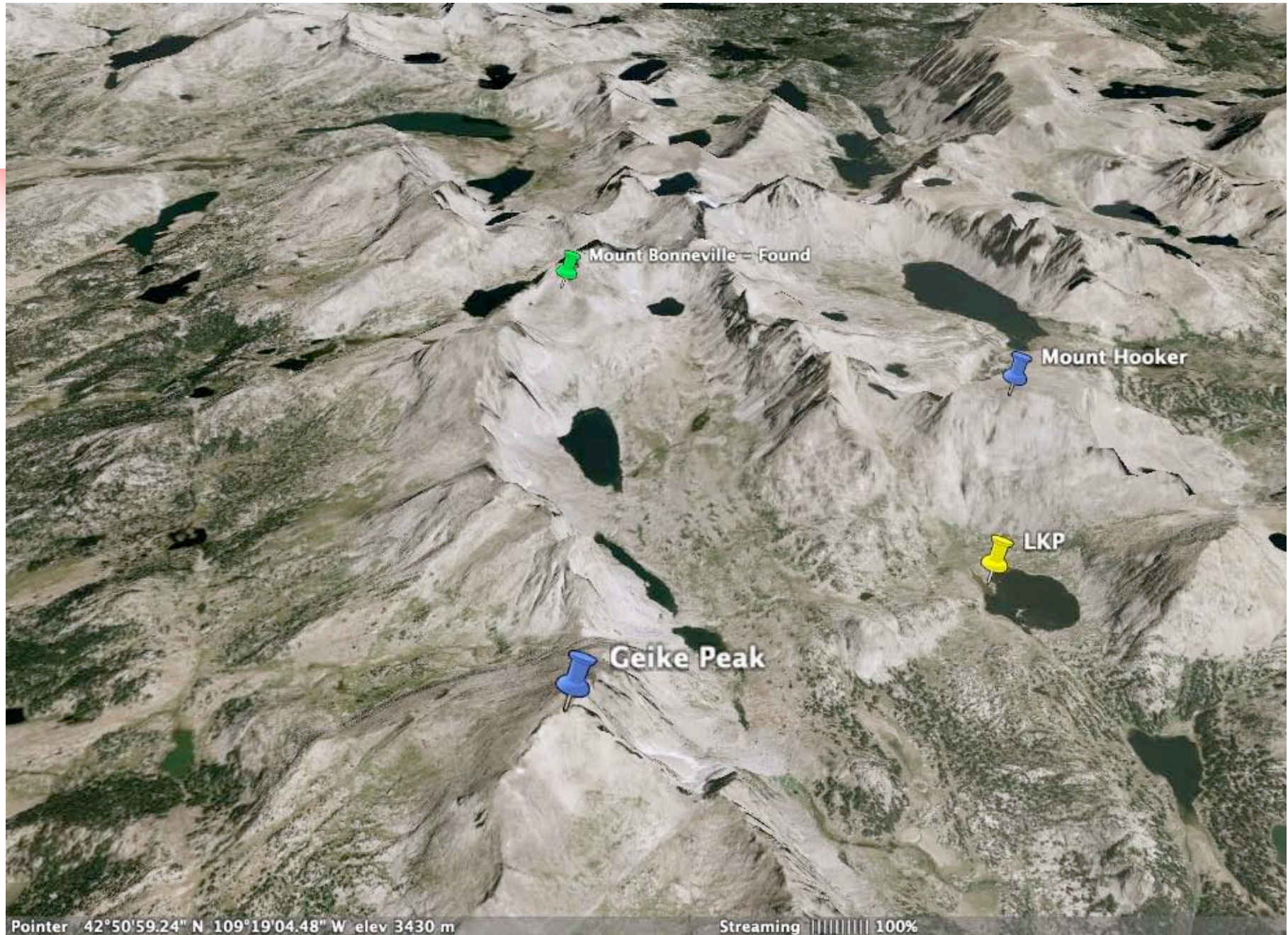
- Helicopter Teams



Resources

- Dog Teams
- Lightning Strike Data
- Family Liaison
- Logistics





Pointer 42°50'59.24" N 109°19'04.48" W elev 3430 m

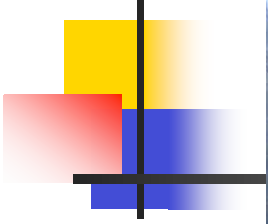
Streaming ||||| 100%

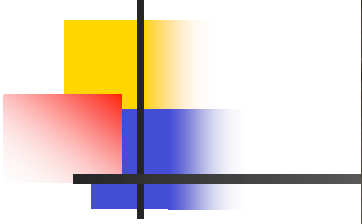




Evacuation in the Wilderness

- Rehab patient - walk out
- Ground
 - Wheeled Litter
 - Improvised Litter
 - Horse
 - Four Wheeler
- Helicopter









Summary

- Pre-planning
- Be prepared for self-evacuation
- Join your local SAR team

www.wildmedconsulting.com

